

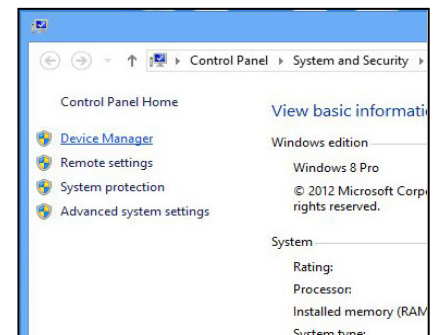
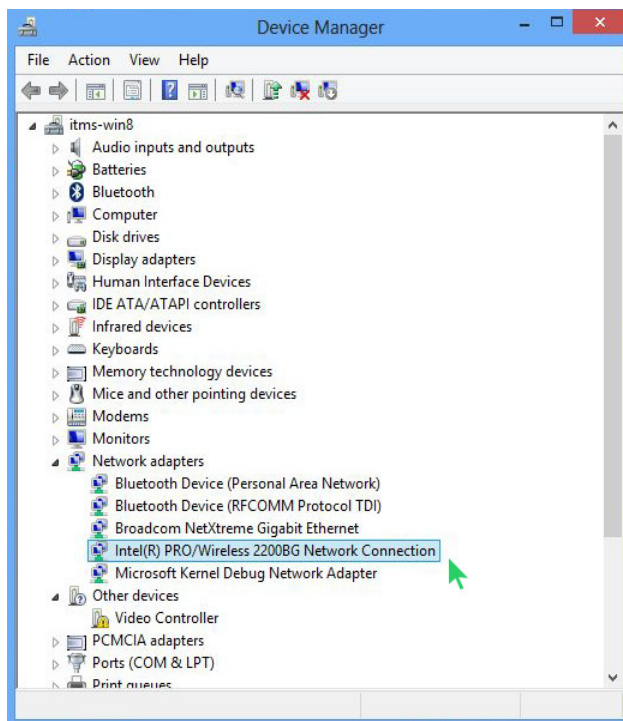
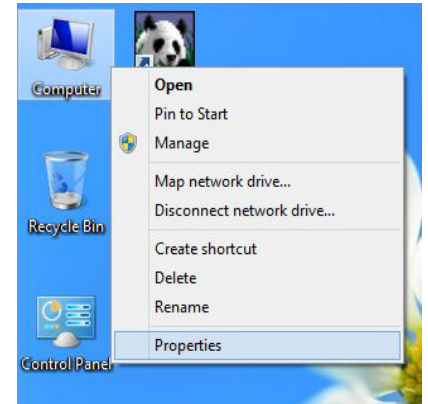
## CONNECTING TO WIFI-STUDENT (WINDOWS 8)

This instruction is for older version of Windows 8 and affect a small percentage of users. If you have newer version of Windows 8 or Windows 8.1, please skip to PAGE 2

Old version of Windows 8 seems to have problem connecting to WIFI-STUDENT. The fault lies with the driver of your Wireless Device. Most of the culprit seems to be Atheros Wi-Fi device. Therefore it is advisable to update the driver of your Wi-Fi device in your laptop.

### HOW TO IDENTIFY YOUR WI-FI ADAPTER?

1. Right-click on **My Computer** on your desktop and select **Properties**
2. Click **Device Manager** on the left
3. Double-click on **Network Adapters** and then you can see the name of your Wi-Fi device adapter.

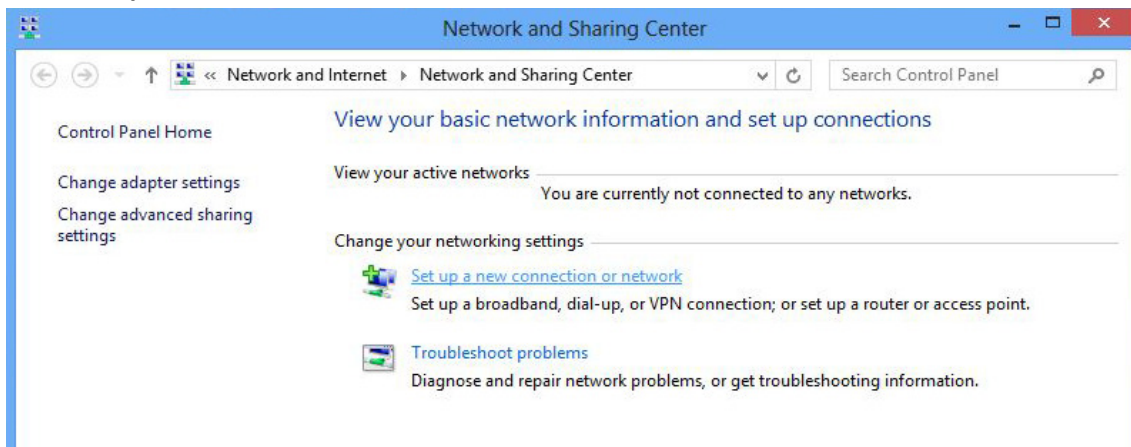
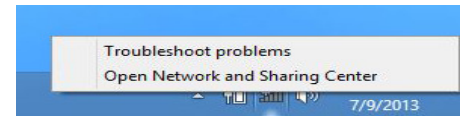


4. Search the Internet for updated version of your driver.
  - a. For Atheros adapter, goto <http://www.atheros.cz>
  - b. For Intel chipset adapter, goto <https://downloadcenter.intel.com/default.aspx>
  - c. For Broadcom, goto [http://www.broadcom.com/support/ethernet\\_nic/downloaddrivers.php](http://www.broadcom.com/support/ethernet_nic/downloaddrivers.php)

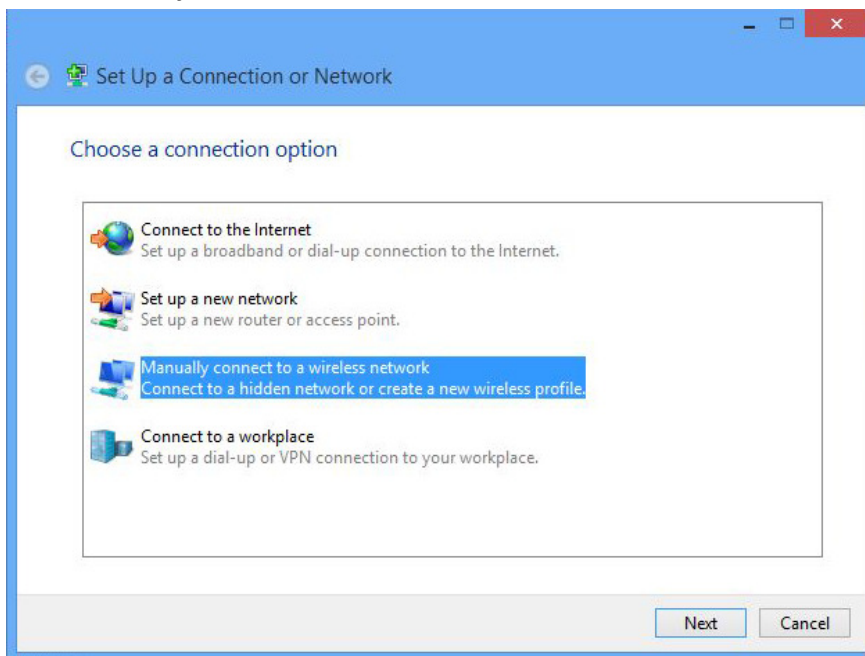
## CONNECTING TO WIFI-STUDENT

Please follow this instruction carefully

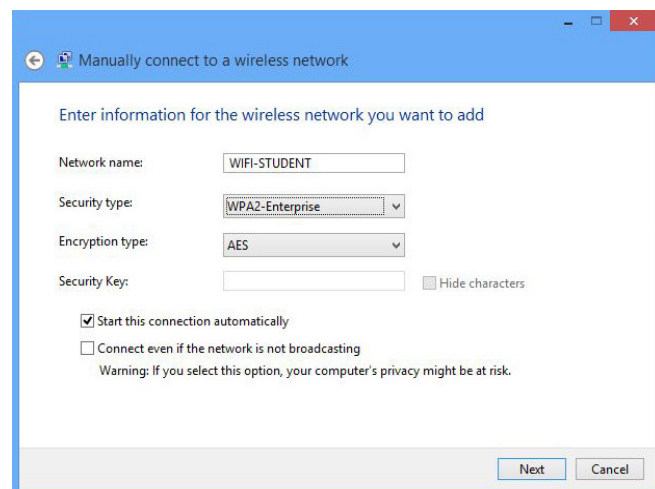
1. Right click on **network icon**, select '**Open Network & Sharing Center**'
2. Click '**Setup New Connection or network**'



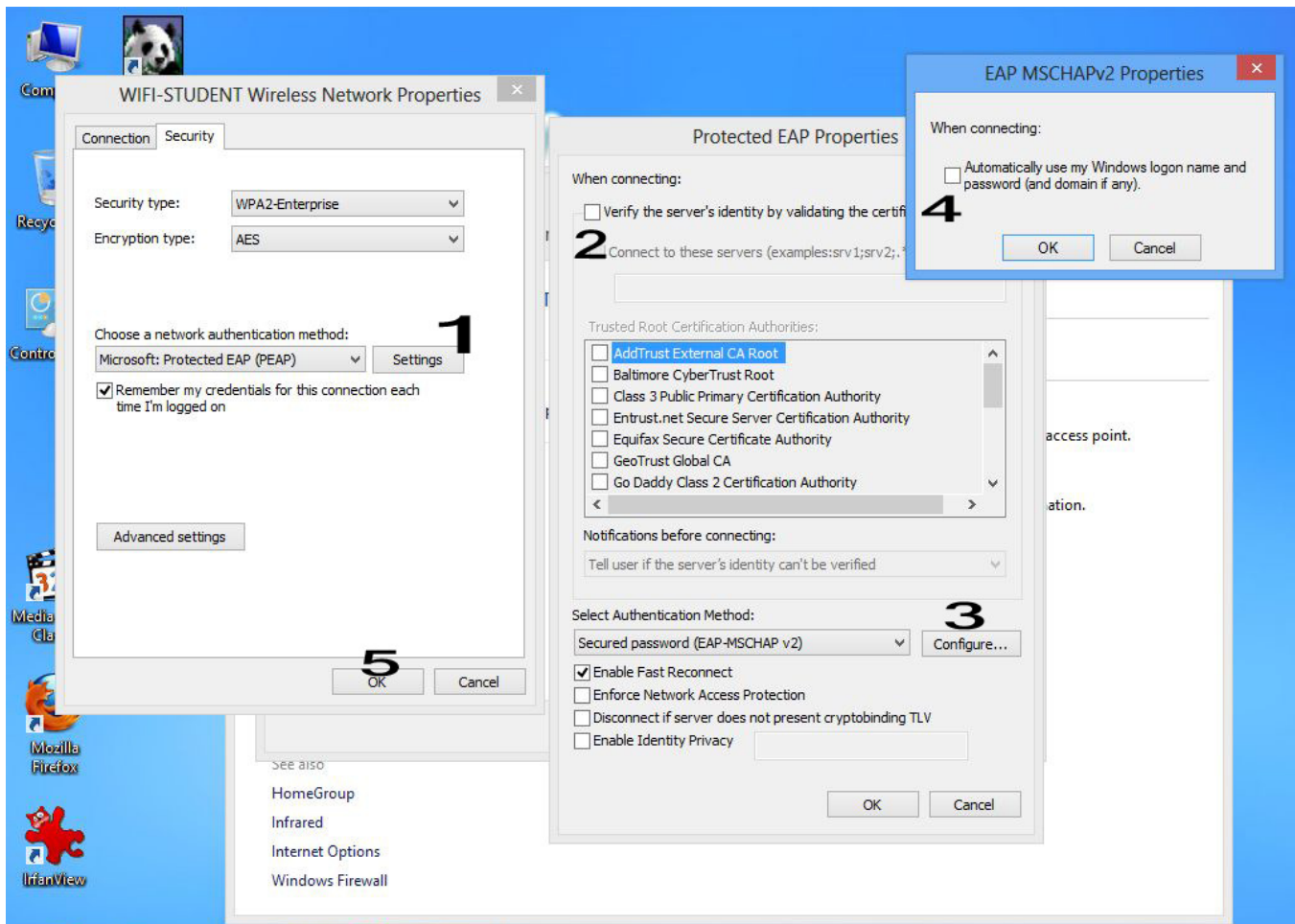
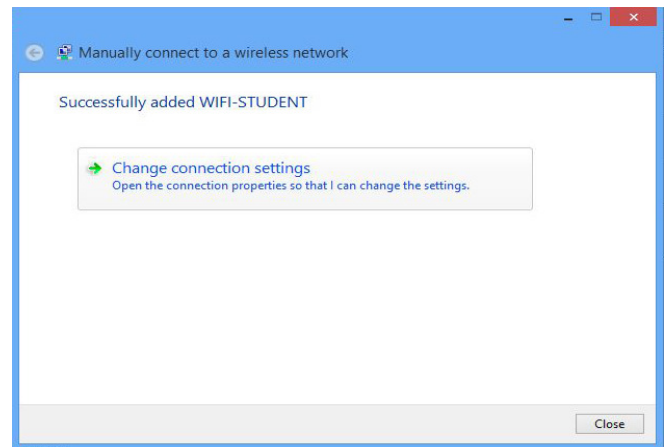
3. Click '**manually connect to wireless network**'



4. Network name → **WIFI-STUDENT**
5. Security Type → **WPA2-ENTERPRISE**
6. Encryption Type → **AES**
7. Press **NEXT**

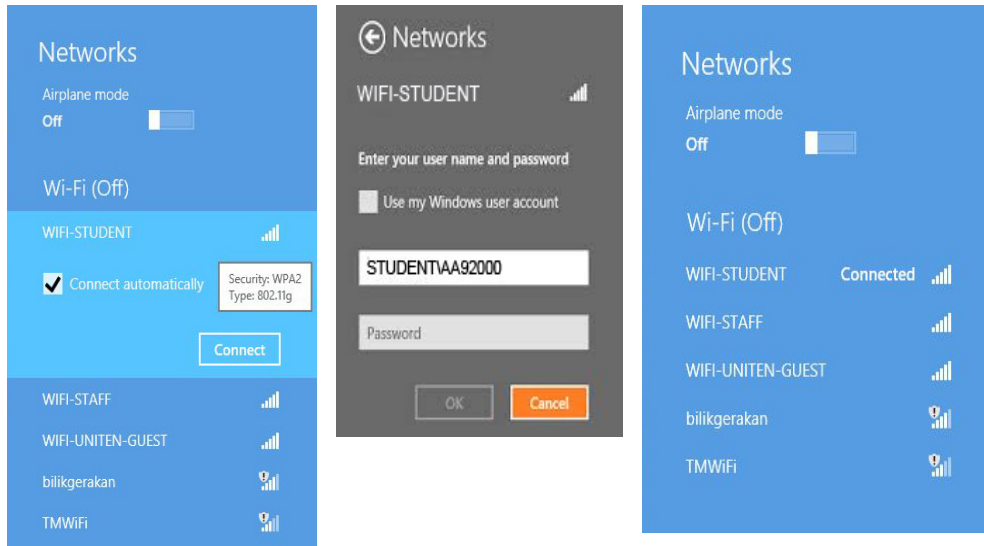


8. Click 'Change Connection Setting'
9. Press 'Security' tab at the top
10. Click 'Settings'
11. Untick 'Validate server certificate'
12. Click 'Configure'
13. Untick 'Automatically use my...."
14. Press OK and close the dialog box



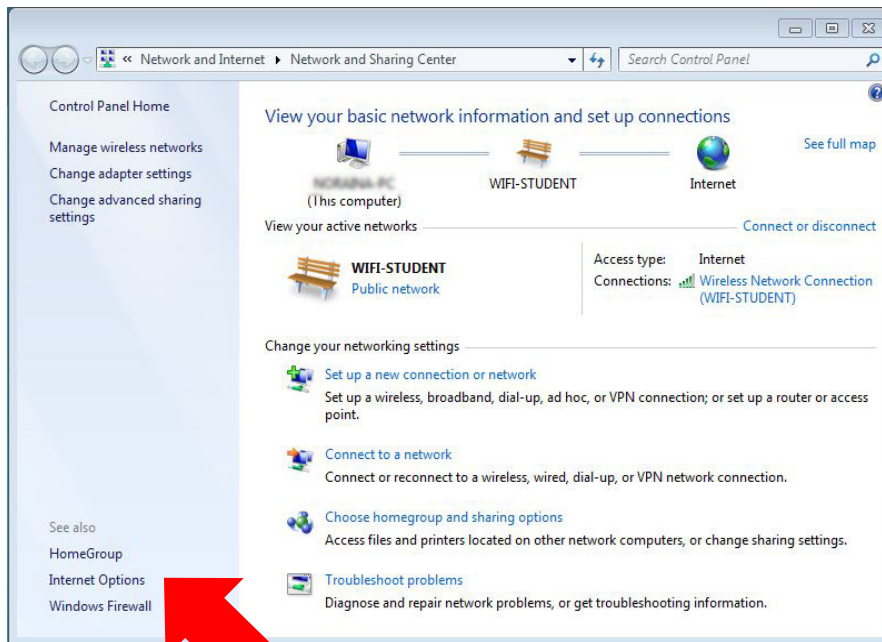
15. To connect, press **the network icon** and select 'WIFI-STUDENT' and press 'CONNECT'

16. Windows 8 may ask for your username and password **TWICE**. Please enter username=**STUDENT\**[your ID] (for example **STUDENT\AA92000**) and password= **your login password** (for example 12345679)

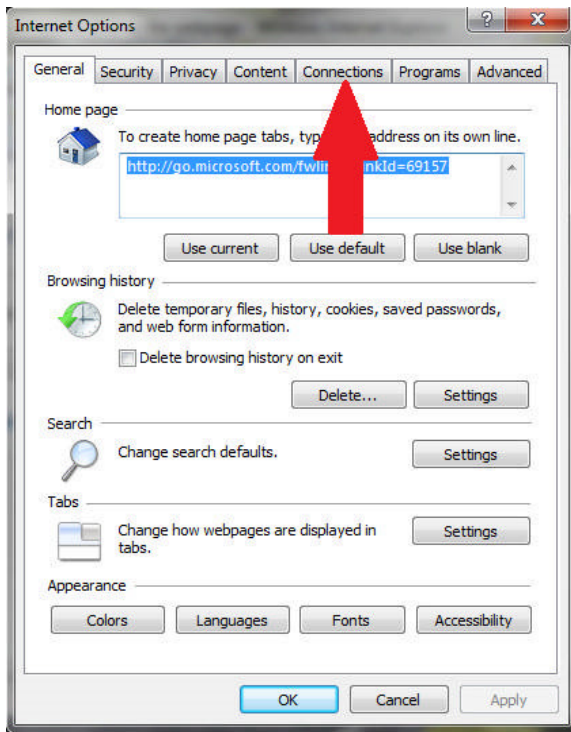


## HOW TO SETUP PROXY

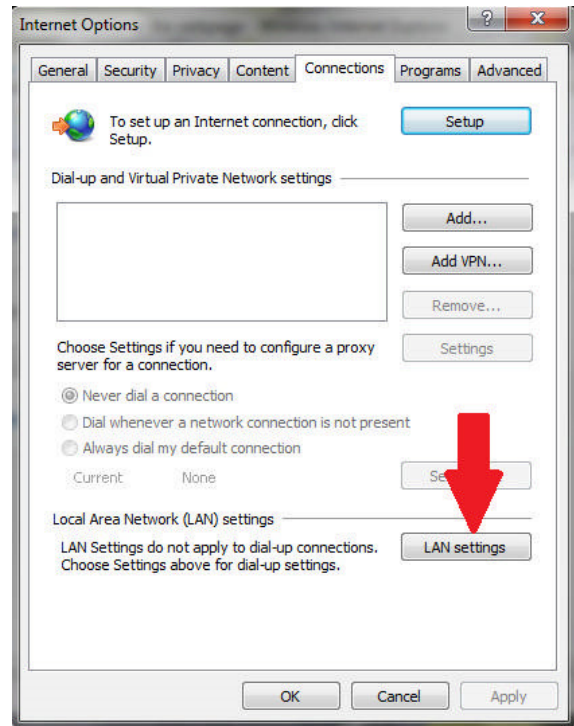
1. Click Internet Option



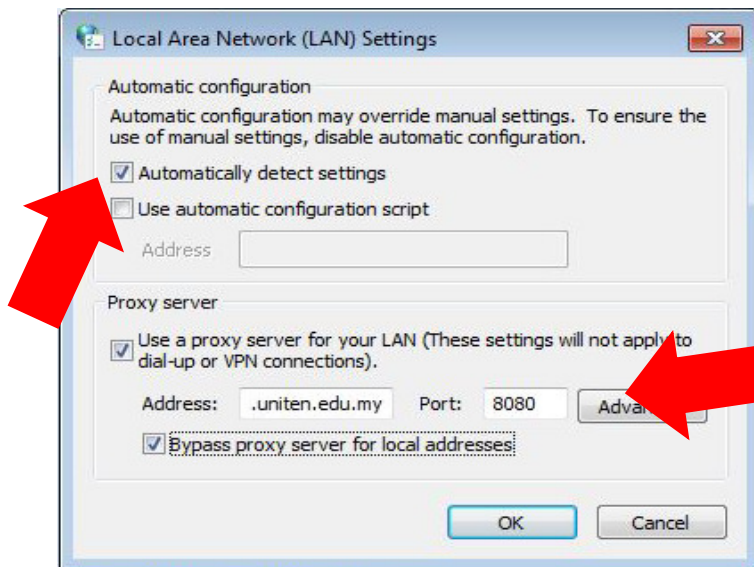
2. Click Connections tab



3. Click LAN Settings



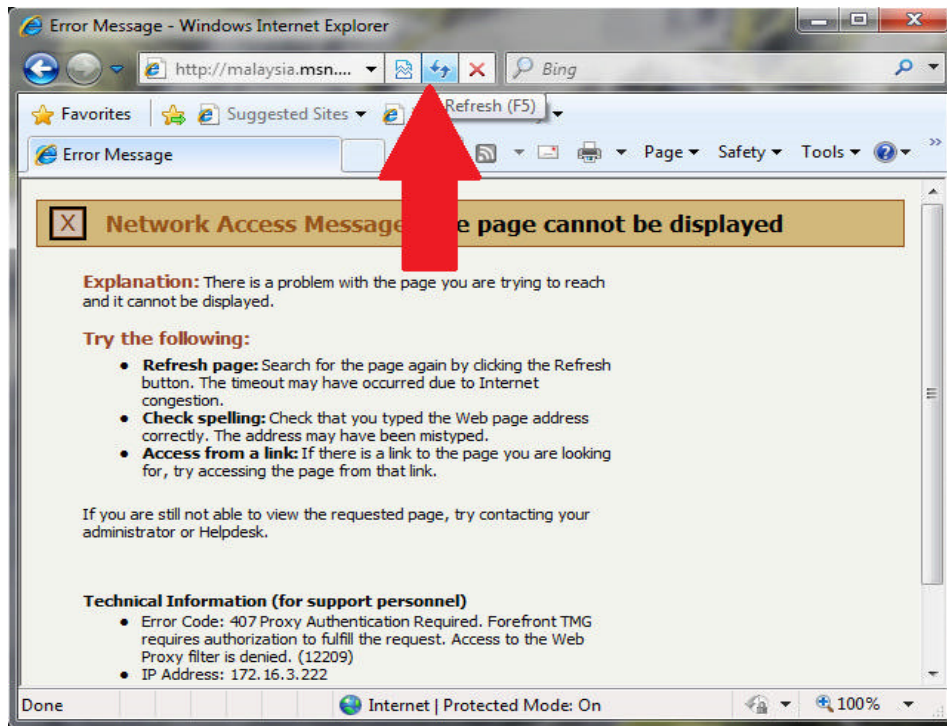
4. Tick 'Automatically detect settings', 'use proxy server.....' dan 'bypass...'



Address = tmg.uniten.edu.my  
Port = 8080

Click Ok 2 times

5. Click the Refresh button on your Internet Explorer or hit F5 on your keyboard



6. Enter your credentials and tick 'Remember My Credential'

